

Primary School Programme of Inquiry 2024 - 2025

Pathways World School

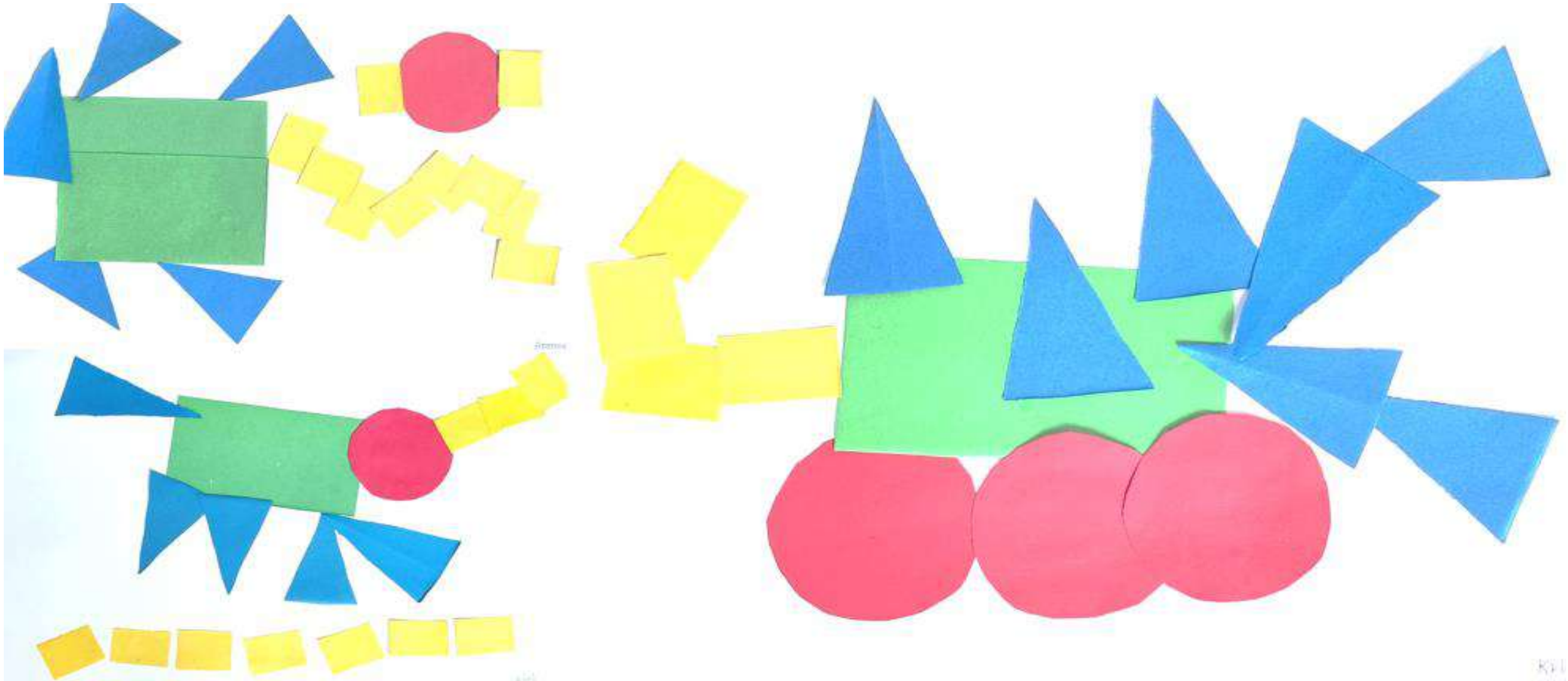


The Programme of Inquiry is a curriculum framework that facilitates inquiry into local and global issues and opportunities by the learners through the six Transdisciplinary Themes:

- Who we are
- Where we are in place and time
- How the world works
- How we express ourselves
- How we organise ourselves
- Sharing the planet

The curriculum framework allows in depth understanding of skills and concepts, and creates opportunities for the learners to take mindful, authentic and responsible action as an outcome of their learning .

Group Work : Pre- Nursery



Pre - Nursery



Hygiene and Well-Being

3 GOOD HEALTH AND WELL-BEING



Who We Are

An inquiry into the nature of the self; beliefs and values; personal, physical, mental, social and spiritual health; human relationships including families, friends, communities, cultures; rights and responsibilities; what it means to be human.

Lines of Inquiry:

What hygiene is

Ways to keep ourselves healthy

Our responsibility towards our well-being

Central Idea:

We have a responsibility towards our well-being.

Concepts and Related Concepts:

Form (*behaviour, patterns*)

Causation (*well-being*)

Responsibility (*self-awareness*)

ATLs:

Communication Skills
(*Exchanging information*)

Social Skills (*Information literacy*)

Reflection

Subject Focus:

Science, PSPE

Attributes:

Inquirer, Knowledgeable, Balanced





Stories

4 QUALITY
EDUCATION



How We Express Ourselves

An inquiry into the ways in which we discover and express ideas, feelings, nature, culture, beliefs and values; the ways in which we reflect on, extend and enjoy our creativity; our appreciation of the aesthetic.

Lines of Inquiry:

How stories make us feel
What we learn from stories
How stories are created and shared

Central Idea:

Stories can stimulate our imagination and communicate meaning.

Concepts and Related Concepts:

Form (*structure, pattern*)

Perspective (*opinion*)

Connection (*influence*)

ATLs:

Communication Skills

(*exchanging information, symbolic exploration and expression*)

Social Skills

(*Interpersonal relationships, social*)

Self-management Skills (*States of mind, organisation*)

Reflection

Subject Focus:

Language, Mathematics, Arts

Attributes :

Thinker, Communicator, Reflective





An inquiry into the interconnectedness of human-made systems and communities; the structure and function of organizations, societal decision-making economic activities and their impact on humankind and the environment.

Lines of Inquiry:

Different roles people play in a community

How community members help us to organize ourselves

Making contributions within the community

Central Idea:

People have different roles and responsibilities within a community.

Concepts and Related Concepts:

Function (role)

Connection (systems, interdependence)

Responsibility (*values, initiatives*)

ATLs :

Research Skills *(Information literacy)*

Social Skills

(Interpersonal relationships, social)

Thinking Skills (Creative and critical thinking)

- **Reflection**

Subject Focus:

Social Studies, PSPE

Attributes:

Reflective, Principled, Inquirer



Animals



Sharing the Planet

An inquiry into rights and responsibilities in the struggle to share finite resources with other people and with other living things; communities and the relationships within and between them; access to equal opportunities; peace and conflict resolution.

Lines of Inquiry:

Different kinds of animals

Ways in which we interact with animals.

How we can create a safe environment to support animal well-being

Central Idea:

Animals and people interact in different ways in different contexts.

Concepts and Related Concepts:

Form (*types, characteristics*)

Connection (*relationships*)

Change (*transformation*)

ATLs:

Communication Skills

(*Exchanging information, symbolic exploration and expression*)

Research Skills (*Information literacy*)

Thinking skills: (*Creative and critical thinking*)

Reflection

Subject Focus:

Social Studies , Science

Attributes:

Risk-taker, Caring, Open-minded

Pratyush Hajra



Nursery



About Me

3 GOOD HEALTH
AND WELL-BEING



Who We Are

An inquiry into the nature of the self; beliefs and values; personal, physical, mental, social and spiritual health; human relationships including families, friends, communities, cultures; rights and responsibilities; what it means to be human.

Lines of Inquiry:

Our physical characteristics and abilities

How we are growing and changing

Our responsibility towards our well-being

Central Idea:

Awareness of our characteristics and abilities can support our learning and development.

Concepts and Related Concepts:

Form (structure, similarities, differences)

Change (growth, transformation)

Responsibility (initiative)

ATLs:

Thinking Skills (*Critical Thinking, Creative Thinking*)

Self-management Skills (*States of mind*)

Social Skills (*Interpersonal relationships, Social and emotional intelligence*)

Reflection

Subject Focus:

Science, Mathematics, PSPE

Attributes:

Thinker, Open-minded Principled





Expressions

4 QUALITY
EDUCATION



How We Express Ourselves

An inquiry into the ways in which we discover and express ideas, feelings, nature, culture, beliefs and values; the ways in which we reflect on, extend and enjoy our creativity; our appreciation of the aesthetic.

Lines of Inquiry:

Exploring elements of art

Tools and materials that can be used to express creativity

Different ways to share our creativity



Central Idea:

We can express, extend, and enjoy our creativity through artistic expressions.

Concepts and Related Concepts:

Form (*structure, patterns, elements*)

Perspective (*opinion, beliefs*)

Connection (*relationships*)

ATLs:

Communication Skills (*Symbolic exploration and expression, Exchanging information*)

Social Skills (*Interpersonal relationships, social and emotional intelligence*)

Thinking Skills (*Creative thinking*)

Reflection

Subject Focus:

Language, Arts

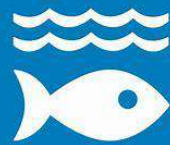
Attributes:

Communicator, Inquirer, Risk-taker



Life Cycles

14 LIFE
BELOW WATER



15 LIFE
ON LAND



How The World Works

An inquiry into the natural world and its laws; the interaction between the natural world (physical and biological) and human societies; how humans use their understanding of scientific principles; the impact of scientific and technological advances on society and on the environment.

Lines of Inquiry:

Characteristics of living things

How living things change over their lifetime

Factors that can impact growth and change



Central Idea:

All living things go through a process of Change.

Concepts and Related Concepts:

Form (*structure, similarities, differences*)

Change (*cycles, growth*)

Causation (*impact*)

ATLs:

Research Skills (*Information literacy*)

Social Skills (*Interpersonal relationships, Social and emotional intelligence*)

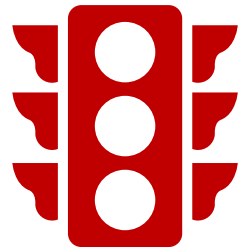
Thinking Skills (*Critical thinking, reflection*)

Subject Focus:

Science, Mathematics

Attributes:

Inquirer, Knowledgeable, Balanced



Transportation

**11 SUSTAINABLE CITIES
AND COMMUNITIES**



How We Organize Ourselves

An inquiry into the interconnectedness of human-made systems and communities; the structure and function of organizations, societal decision-making economic activities and their impact on humankind and the environment.

Lines of Inquiry:

Kinds of transportation people use

Role of different kinds of transportation

How transportation connects communities

Central Idea:

Transportation can connect communities near and far.

Concepts and Related Concepts:

Form (*structure, similarities, differences*)

Function (*role, patterns*)

Connection (*systems, networks*)

ATLs:

Thinking Skills (*Critical thinking*)

Communication Skills
(*Symbolic exploration and expression, Exchanging information*)

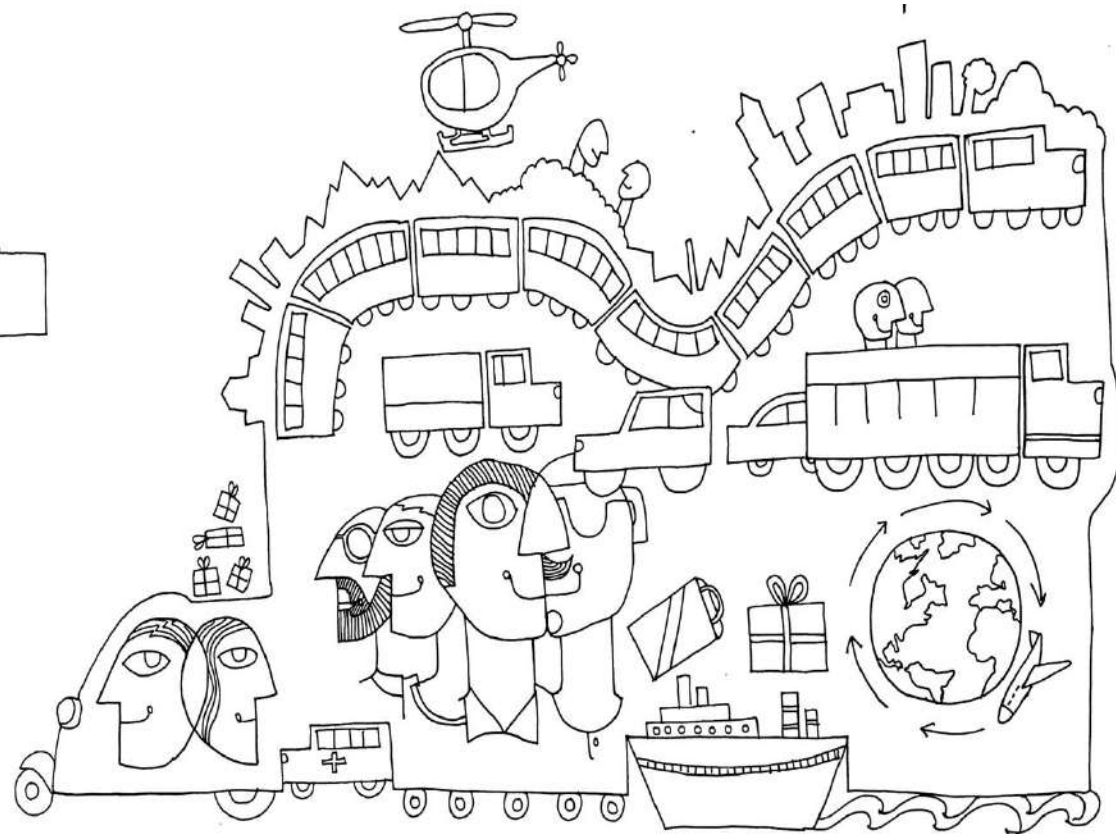
Reflection

Subject Focus:

Social Studies, Mathematics

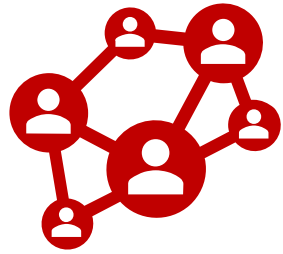
Attributes:

Thinker, Reflective, Communicator





Kindergarten



Relationships

3 GOOD HEALTH
AND WELL-BEING



Who We Are

An inquiry into the nature of the self; beliefs and values; personal, physical, mental, social and spiritual health; human relationships including families, friends, communities, cultures; rights and responsibilities; what it means to be human.

Lines of Inquiry:

How we develop relationships

Roles and behaviours within relationships

How relationships affect us



Central Idea:

People's relationships with each other can have an impact on their well-being.

Concepts and Related Concepts:

Perspective (*opinion, beliefs*)

Function (*role, behaviour*)

Causation (*impact*)

ATLs:

Social Skills

(*Interpersonal relationships, social and emotional intelligence*)

Self-management Skills

(*States of mind, Organisation*)

Reflection and Metacognition

Subject Focus:

Social studies, PSPE Language

Attributes:

Open-minded, Balanced, Reflective



Celebrations

10 REDUCED
INEQUALITIES



How We Express Ourselves

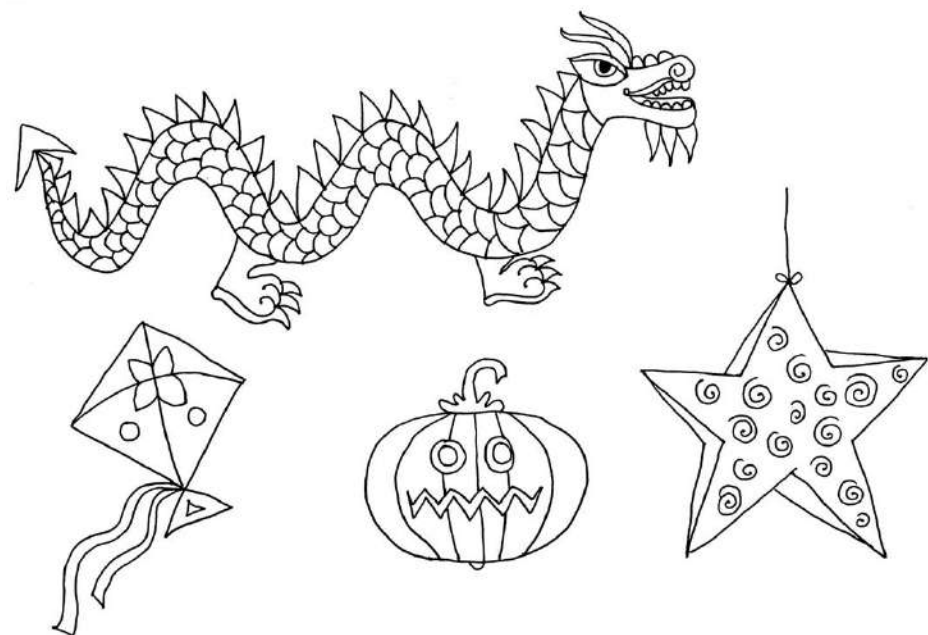
An inquiry into the ways in which we discover and express ideas, feelings, nature, culture, beliefs and values; the ways in which we reflect on, extend and enjoy our creativity; our appreciation of the aesthetic.

Lines of Inquiry :

Different kinds of celebrations

Reasons for celebrations

Unique ways of celebrations



Central Idea :

Every culture has its own reasons for and ways of celebrations.

Concepts and Related Concepts :

Form (*similarities, differences*)

Causation (*impact*)

Perspective (*beliefs*)

ATLs :

Social Skills

(*Interpersonal relationships, social and emotional intelligence*)

Communication Skills

(*Exchanging information*)

Thinking Skills (*Critical and creative thinking*)

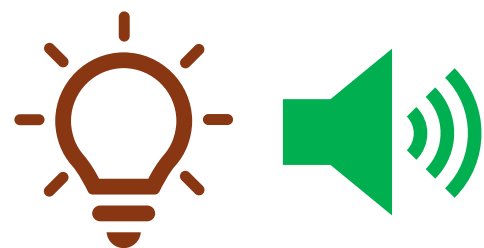
Reflection and Metacognition

Subject Focus:

Social studies, Arts
PSPE

Attributes:

Knowledgeable, Open-minded,
Communicator



Light and Sound

**7 AFFORDABLE AND
CLEAN ENERGY**



How The World Works

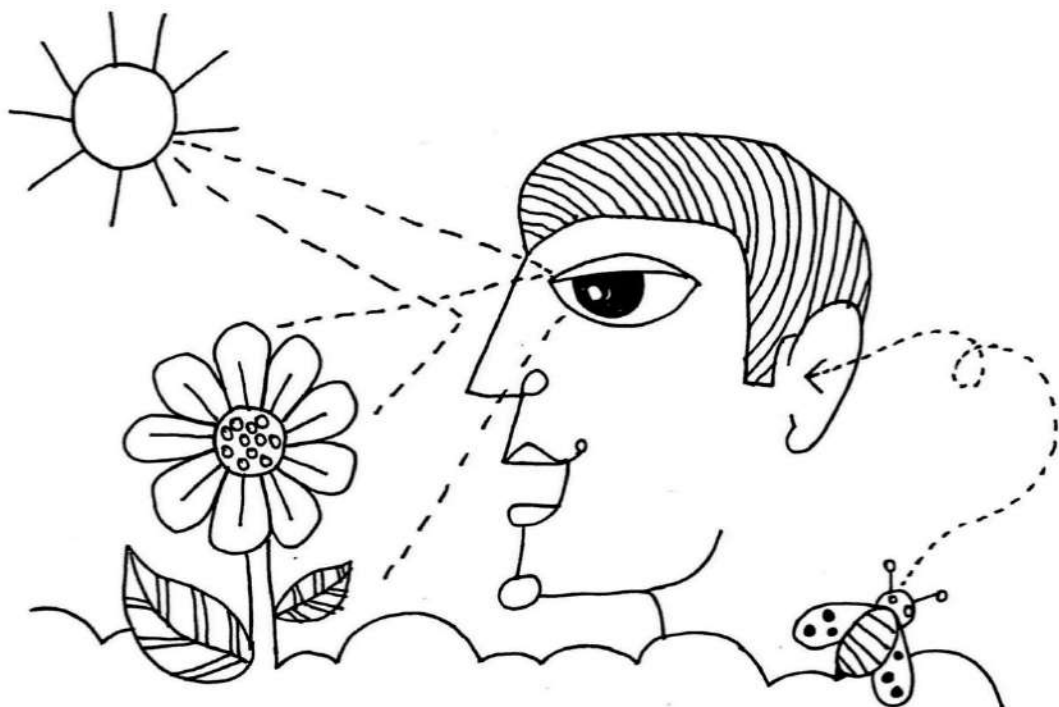
An inquiry into the natural world and its laws; the interaction between the natural world (physical and biological) and human societies; how humans use their understanding of scientific principles; the impact of scientific and technological advances on society and on the environment.

Lines of Inquiry:

Sources and properties of light and sound

Role of light and sound in our lives

Light and sound can be manipulated to suit our needs



Central Idea:

Light and sound can help us to experience the world.

Concepts and Related Concepts:

Form (*structure, properties*)

Function (*role*)

Change (*transformation*)

ATLs:

Thinking Skills (*Critical and creative thinking*)

Research Skills (*Information Literacy*)

Reflection and Metacognition

Subject Focus:

Science, Social Studies

Attributes:

Thinker
Inquirer
Risk-taker



Plants

15 LIFE
ON LAND



Sharing The Planet

An inquiry into rights and responsibilities in the struggle to share finite resources with other people and with other living things; communities and the relationships within and between them; access to equal opportunities; peace and conflict resolution.

Lines of Inquiry:

Kinds of plants and their structure

How plants support life on Earth

Ways to conserve plant life

Central Idea:

Conservation of plants can impact the well-being of living beings.

Concepts and Related Concepts:

Form (*structure*)

Connection (*interdependence*)

Responsibility (*initiative*)

ATLs:

Research Skills (*Information Literacy*)

Thinking Skills (*Critical thinking*)

Social skills (*Interpersonal relationships, social*)

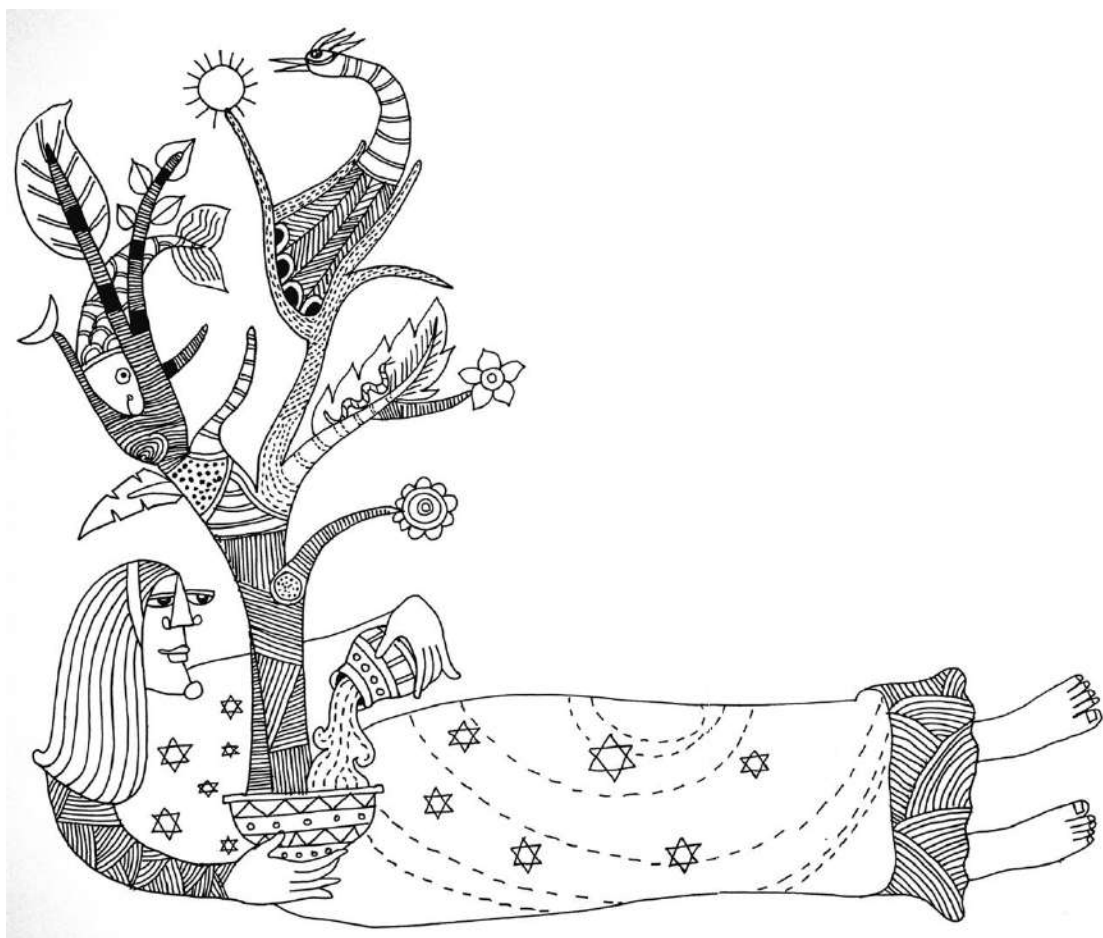
Reflection and Metacognition

Subject Focus:

Science, Mathematics
Social Studies

Attributes:

Inquirer, Principled, Caring





PYP 1



Health

**3 GOOD HEALTH
AND WELL-BEING**



Who We Are

An inquiry into the nature of the self; beliefs and values; personal, physical, mental, social and spiritual health; human relationships including families, friends, communities, cultures; rights and responsibilities; what it means to be human.

Lines of Inquiry :

Role of daily habits and routines

Factors that contribute to health

Choices we can make to keep ourselves healthy

Central Idea :

Making balanced choices about daily routines can promote a healthy lifestyle.

Concepts and Related Concepts :

Function (*behaviour and pattern*)

Causation (*impact*)

Responsibility (*Self-awareness*)



ATLs :

Self-management Skills

(*Organisation, States of mind*)

Research Skills (*Information literacy*)

Thinking skills (*Critical Thinking*)

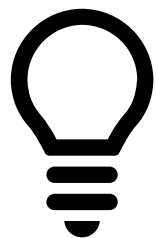
Reflection and Metacognition

Subject Focus:

Science, Mathematics
PSPE

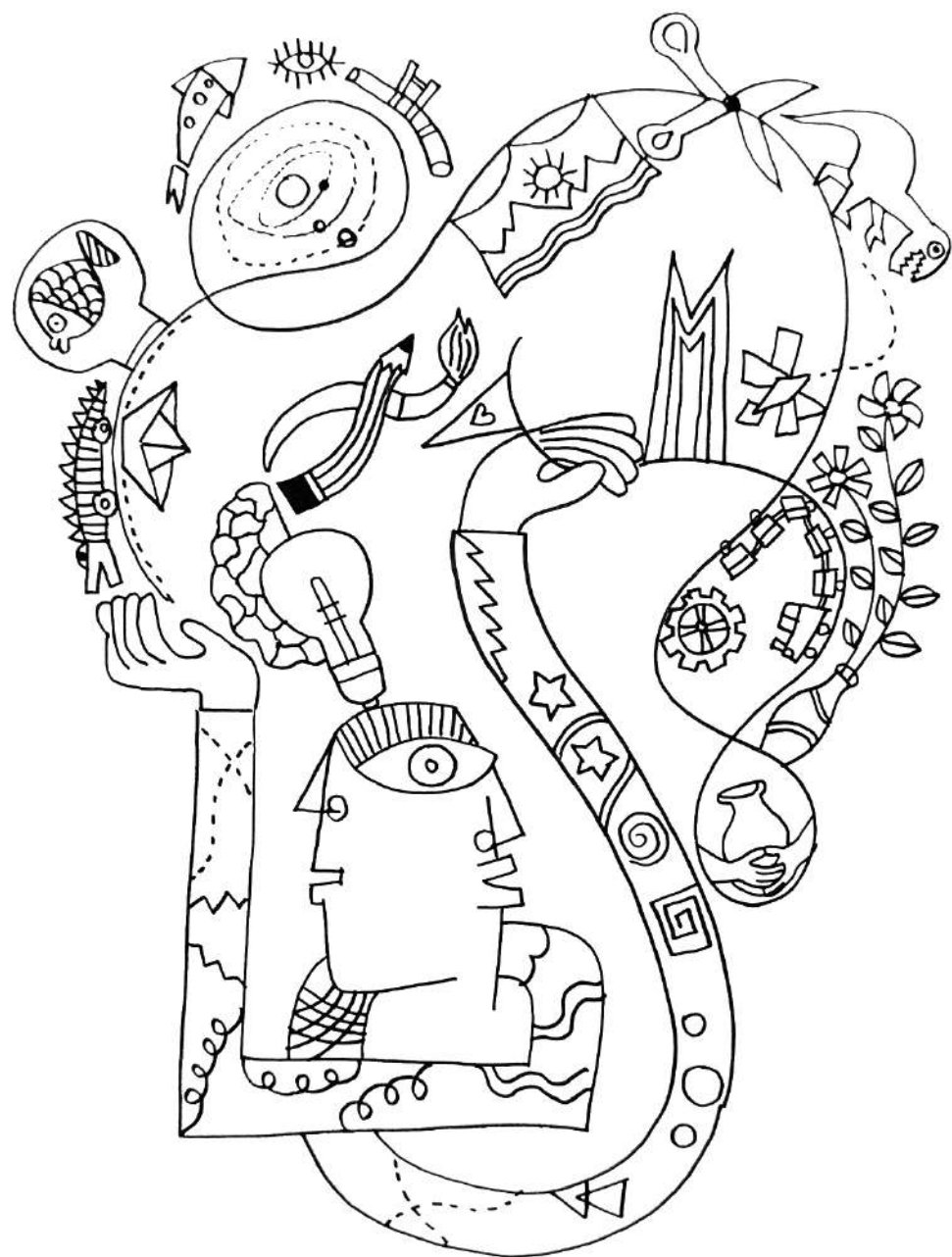
Attributes:

Balanced, Knowledgeable,
Principled



Imagination

4 QUALITY
EDUCATION



How We Express Ourselves

An inquiry into the ways in which we discover and express ideas, feelings, nature, culture, beliefs and values; the ways in which we reflect on, extend and enjoy our creativity; our appreciation of the aesthetic.

Lines of Inquiry:

Kinds of material and its properties

Ways to manipulate materials to express our ideas

Discovering innovative solutions using materials

Central Idea:

Materials can be manipulated to express innovatively.

Concepts and Related Concepts:

Form (*properties*)

Change (*transformation*)

Perspective (*beliefs, viewpoints*)

ATLs:

Thinking skills (*Creative Thinking*)

Social Skills (*Interpersonal relationships*)

Communication Skills (*Information exchange, symbolic exploration and expression*)

Reflection and metacognition

Subject Focus:

Language, Science, Arts

Attributes:

Thinker, Risk-taker, Communicator

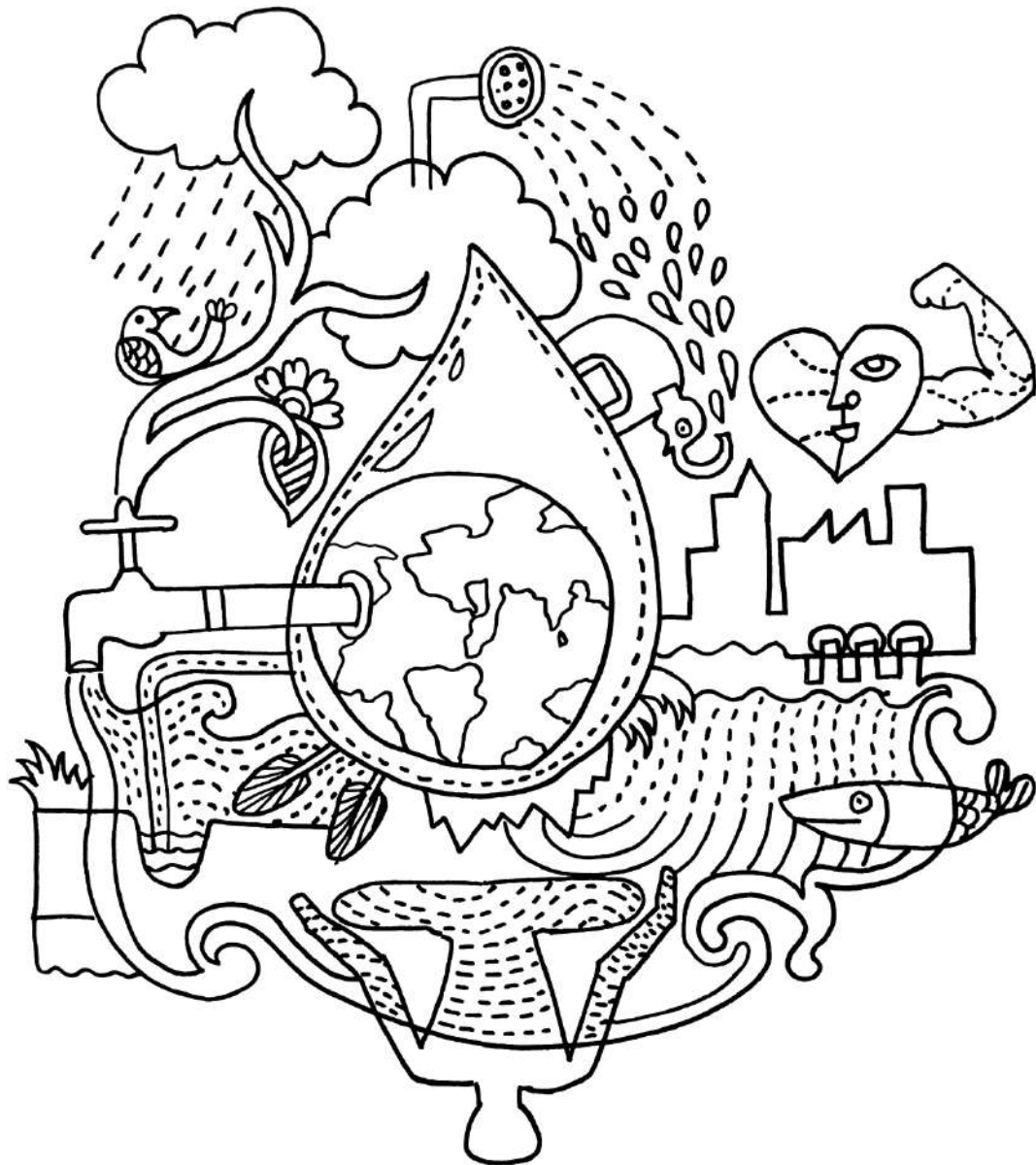


How The World Works

An inquiry into the natural world and its laws; the interaction between the natural world (physical and biological) and human societies; how humans use their understanding of scientific principles; the impact of scientific and technological advances on society and on the environment.

Lines of Inquiry:

Different stages water goes through
How water sustains life
Making responsible choices



Central Idea:

Our choices while using water can contribute to solving the global crisis.

Concepts and Related Concepts:

Change (*cycles*)

Connection (*interdependence*)

Responsibility (*initiative, rights*)

ATLs:

Research Skills (*Information literacy*)

Thinking Skills (*Critical thinking skills; Transfer skills*)

Communication Skills (*Information exchange*)

Reflection and metacognition

Subject Focus:

Science, Social Studies

Attributes:

Reflective, Knowledgeable, Open-minded



Cities

11 SUSTAINABLE CITIES AND COMMUNITIES



How We Organize Ourselves

An inquiry into the interconnectedness of human-made systems and communities; the structure and function of organizations, societal decision-making economic activities and their impact on humankind and the environment.

Lines of Inquiry:

Characteristics of a city

Needs and challenges of the inhabitants

Creating sustainable cities

Role of aesthetics in city design

Central Idea:

Cities can continuously evolve to meet the changing needs and challenges of their inhabitants.

Concepts and Related Concepts:

Form (*structure, characteristics*)

Connection (*interdependence, systems*)

Responsibility (*initiative, citizenship*)

ATLs:

Research Skills (*Information literacy*)

Thinking Skills (*Critical and Creative thinking*)

Reflection and metacognition

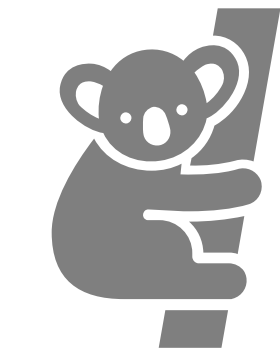
Subject Focus:

Social Studies
Mathematics, Arts

Attributes:

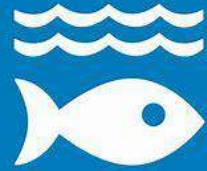
Inquirer, Knowledgeable, Thinker





Animals

14 LIFE
BELOW WATER



15 LIFE
ON LAND



Sharing The Planet

An inquiry into rights and responsibilities in the struggle to share finite resources with other people and with other living things; communities and the relationships within and between them; access to equal opportunities; peace and conflict resolution.

Lines of Inquiry:

- Different kinds of natural habitats
- Reasons threatening animal survival
- Our role in protecting animals

Central Idea:

Human activities can have an impact on animal survival.

Concepts and Related Concepts :

- Form** (*properties, differences*)
- Causation** (*impact, consequences*)
- Responsibility** (*initiative, values*)

ATLs :

Research Skills (*Information literacy*)

Thinking Skills (*Critical thinking*)

Social Skills (*Interpersonal relationships*)

Reflection and Metacognition

Subject Focus:

Science, Social Studies, PSPE

Attributes:

Inquirer, Caring, Reflective





PYP 2





Human Body

3 GOOD HEALTH AND WELL-BEING



Who We Are

An inquiry into the nature of the self; beliefs and values; personal, physical, mental, social and spiritual health; human relationships including families, friends, communities, cultures; rights and responsibilities; what it means to be human.

Lines of Inquiry:

Our body systems

Role of our body systems

Ways in which we can contribute to our well-being



Central Idea:

Understanding our body system can impact our well-being.

Concepts and Related Concepts:

Form (*structure*)

Function (*role, system*)

Responsibility (*self-awareness*)



ATLs:

Research Skills (*Information literacy*)

Self-management Skills (*States of mind*)

Reflection and metacognition

Subject Focus:

Science, Mathematics, PSPE

Attributes:

Inquirer, Balanced



Homes

**11 SUSTAINABLE CITIES
AND COMMUNITIES**



Where We Are In Place & Time

An inquiry into and orientation in place and time; personal histories; homes and journeys; the discoveries; explorations and migrations of humankind; the relationships between and the interconnectedness of individuals and civilizations, from local and global perspectives.

Lines of Inquiry:

Types of homes around the world

How local conditions influence the way we live

Ways to promote a sustainable living

Central Idea:

Our environment can influence how we live.

Concepts and Related Concepts:

Form (*structure, design*)

Connection (*lifestyle, geography*)

Responsibility (*initiative, conservation*)

ATLs:

Research Skills (*Information literacy*)

Thinking Skills (*Information transfer*)

Communication Skills (*Exchanging Information*)

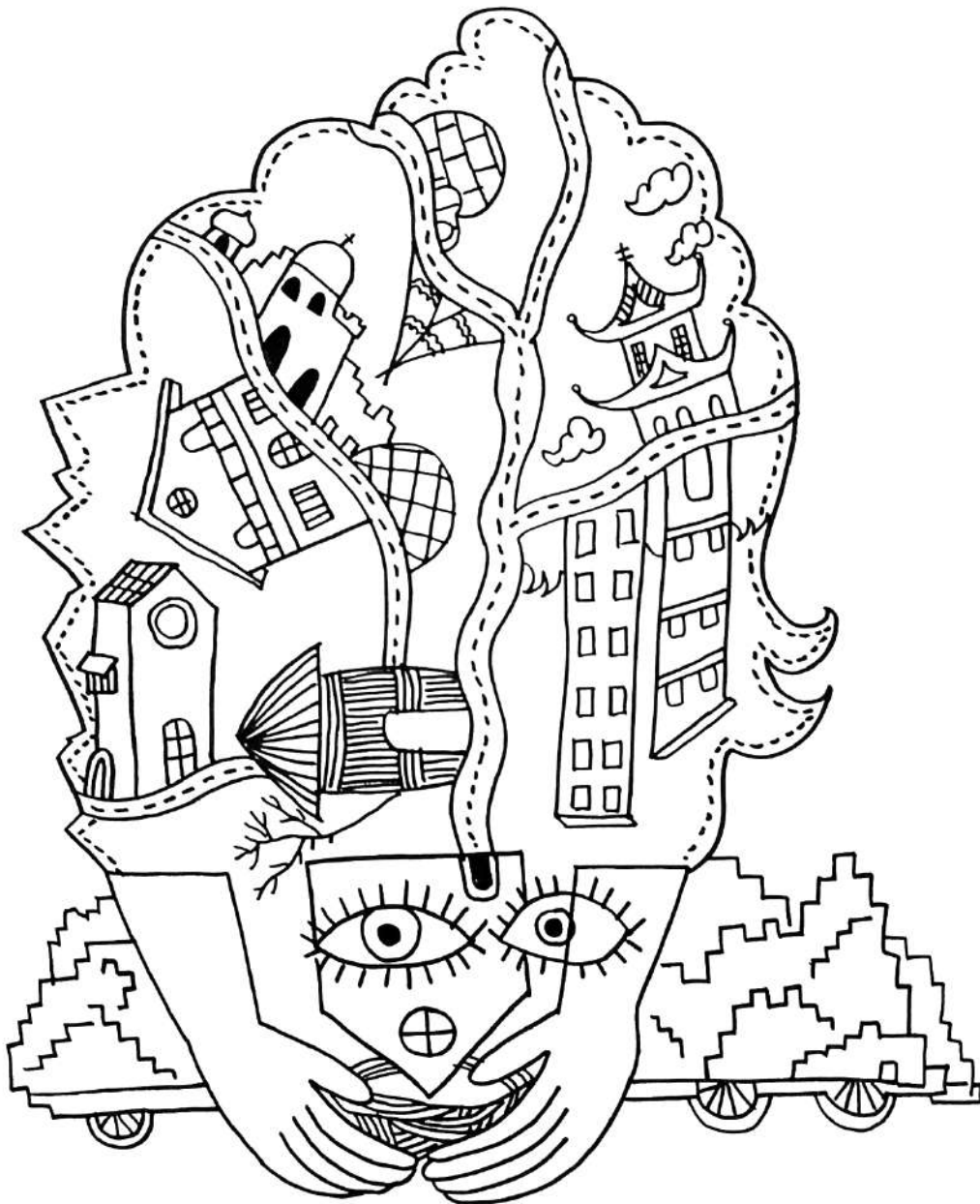
Reflection and metacognition

Subject Focus:

Language, Social Studies

Attributes :

Communicator, Thinker, Open-minded





Art Expression

4 QUALITY
EDUCATION



How We Express Ourselves

An inquiry into the ways in which we discover and express ideas, feelings, nature, culture, beliefs and values; the ways in which we reflect on, extend and enjoy our creativity; our appreciation of the aesthetic.

Lines of Inquiry :

Forms of artistic expressions

Influence of art on society

Unique ways of self- expressions

Central Idea :

Artistic expressions can influence society in different ways..

Concepts and Related Concepts :

Form (*characteristics*)

Change (*role, transformation, impact*)

Perspective (*interpretation, opinion*)

ATLs :

Thinking Skills (*Creative thinking and critical thinking*)

Communication Skills (*Exchanging Information*)

Reflection and metacognition

Subject Focus:

Social Studies, Arts, Language

Attributes:

Thinker, Communicator, Risk-taker





Earth

13 CLIMATE ACTION



How The World Works

An inquiry into the natural world and its laws; the interaction between the natural world (physical and biological) and human societies; how humans use their understanding of scientific principles; the impact of scientific and technological advances on society and on the environment.

Lines of Inquiry:

Origin of the Earth and its physical features

How the Earth continues to change

Our preparedness towards these changes

Central Idea:

Planet Earth has evolved over time and continues to change.

Concepts and Related Concepts:

Form (*properties, structure*)

Change (*transformation, adaptation*)

Responsibility (*initiative*)

ATLs:

Thinking Skills (*Critical thinking*)

Research Skills (*Information literacy*)

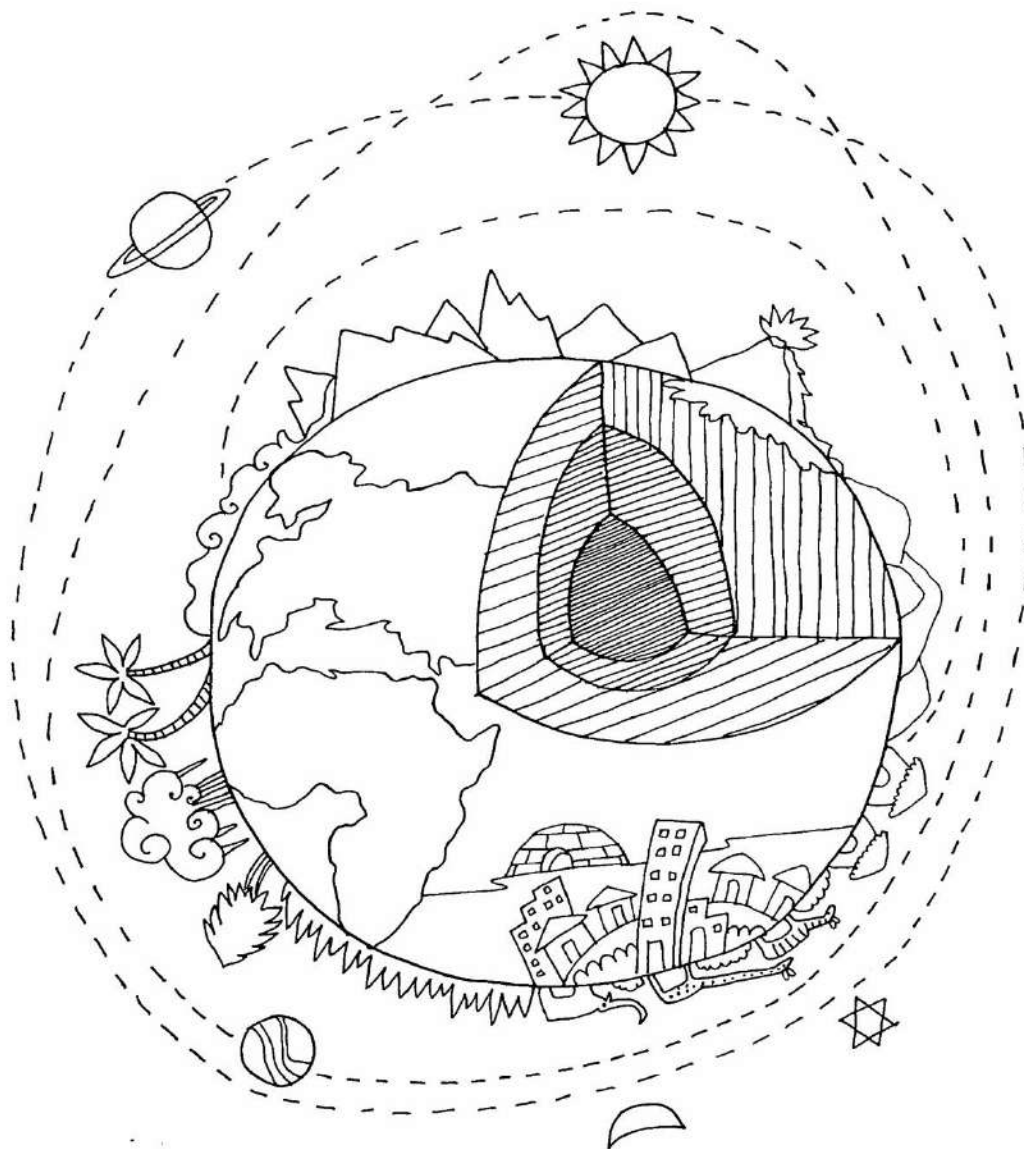
Reflection and metacognition

Subject Focus:

Science, Social Studies

Attributes:

Knowledgeable, Inquirer, Balanced





How We Organize Ourselves

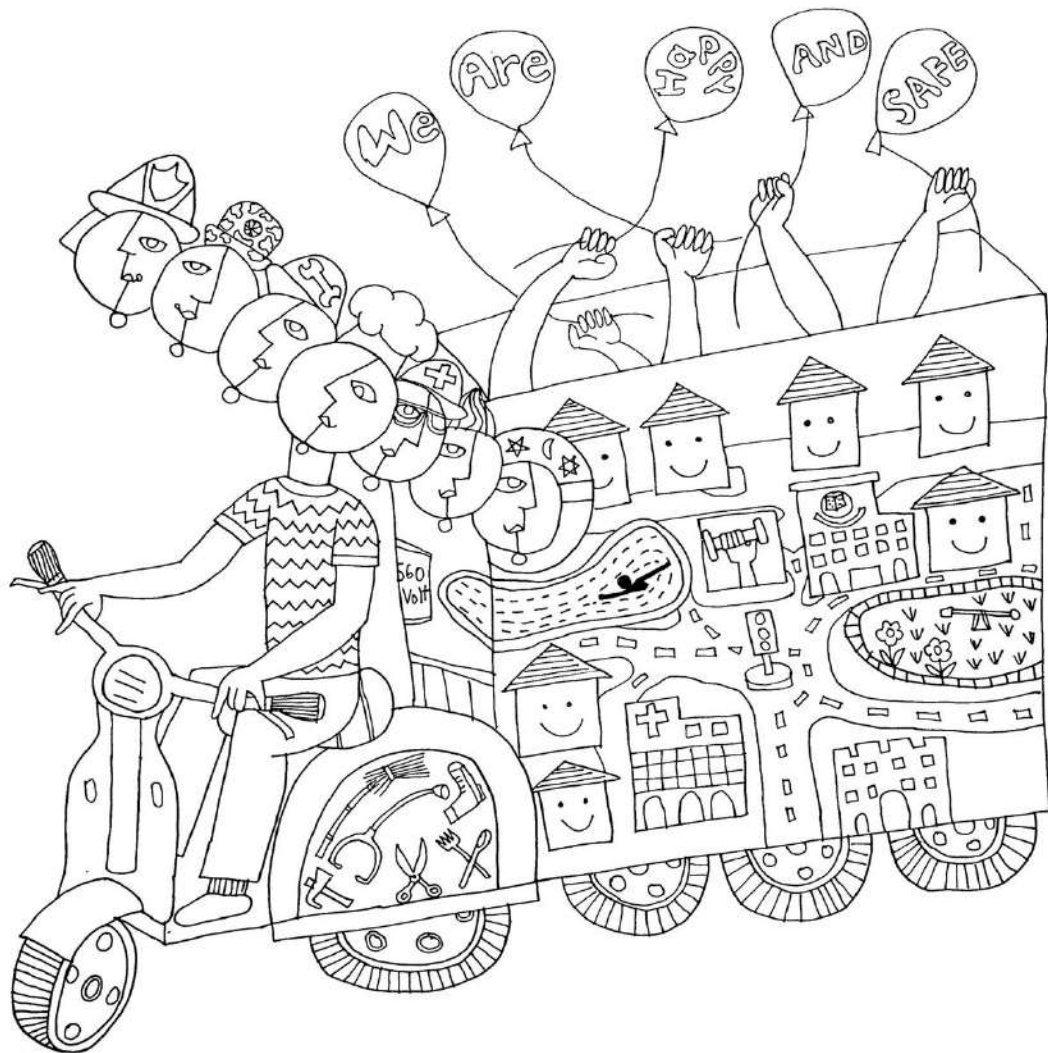
An inquiry into the interconnectedness of human-made systems and communities; the structure and function of organizations, societal decision-making economic activities and their impact on humankind and the environment.

Lines of Inquiry:

Kinds of communities

Interconnectedness of the human made systems and communities

Our responsibility within a community



Central Idea:

Sharing responsibility towards a common purpose fosters unity within a community.

Concepts and Related Concepts:

Form (*characteristics, structure*)

Connection (*systems, interdependence*)

Responsibility (*values, initiatives*)

ATLs:

Thinking Skills (*Critical thinking*)

Social Skills (*Interpersonal relationships, social and emotional intelligence*)

Reflection and metacognition

Subject Focus:

Social Studies, PSPE

Attributes:

Knowledgeable, Principled, Caring



**12 RESPONSIBLE
CONSUMPTION
AND PRODUCTION**



Sharing The Planet

An inquiry into rights and responsibilities in the struggle to share finite resources with other people and with other living things; communities and the relationships within and between them; access to equal opportunities; peace and conflict resolution.

Lines of Inquiry:

What waste is
Effects of waste on our environment
Our responsibility towards managing waste



Central Idea:

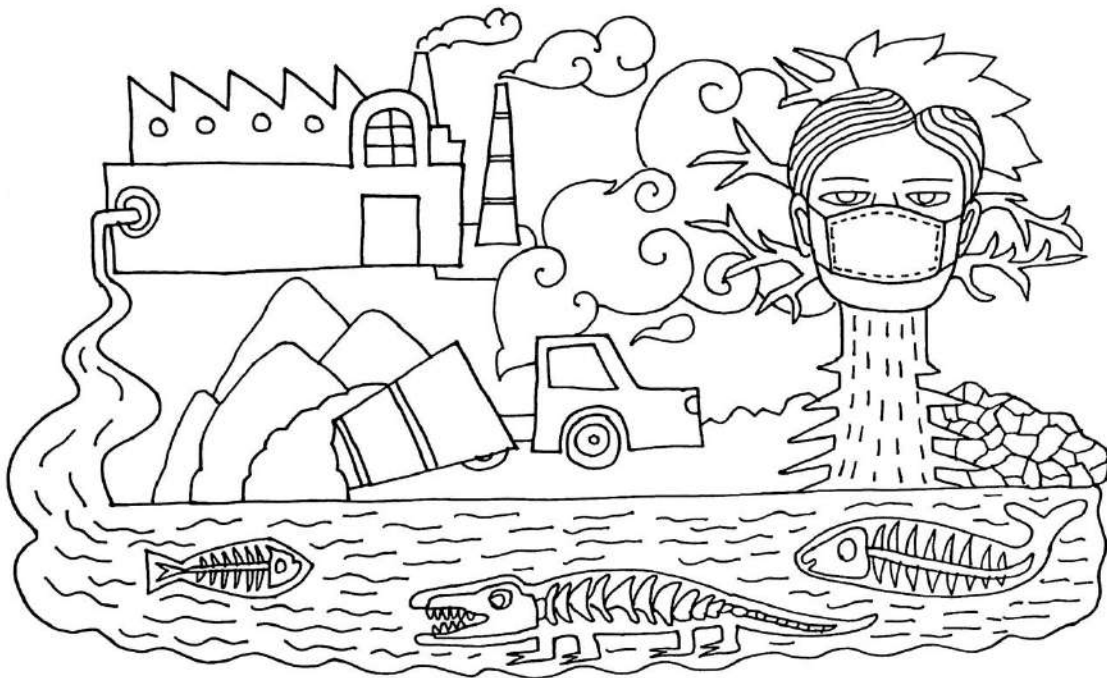
Waste management can impact the quality of life.

Concepts and Related Concepts:

Form (*properties*)

Causation (*impact, consequences*)

Responsibility (*initiative, citizenship*)



ATLs:

Research Skills (*Information literacy*)

Thinking Skills (*Information transfer*)

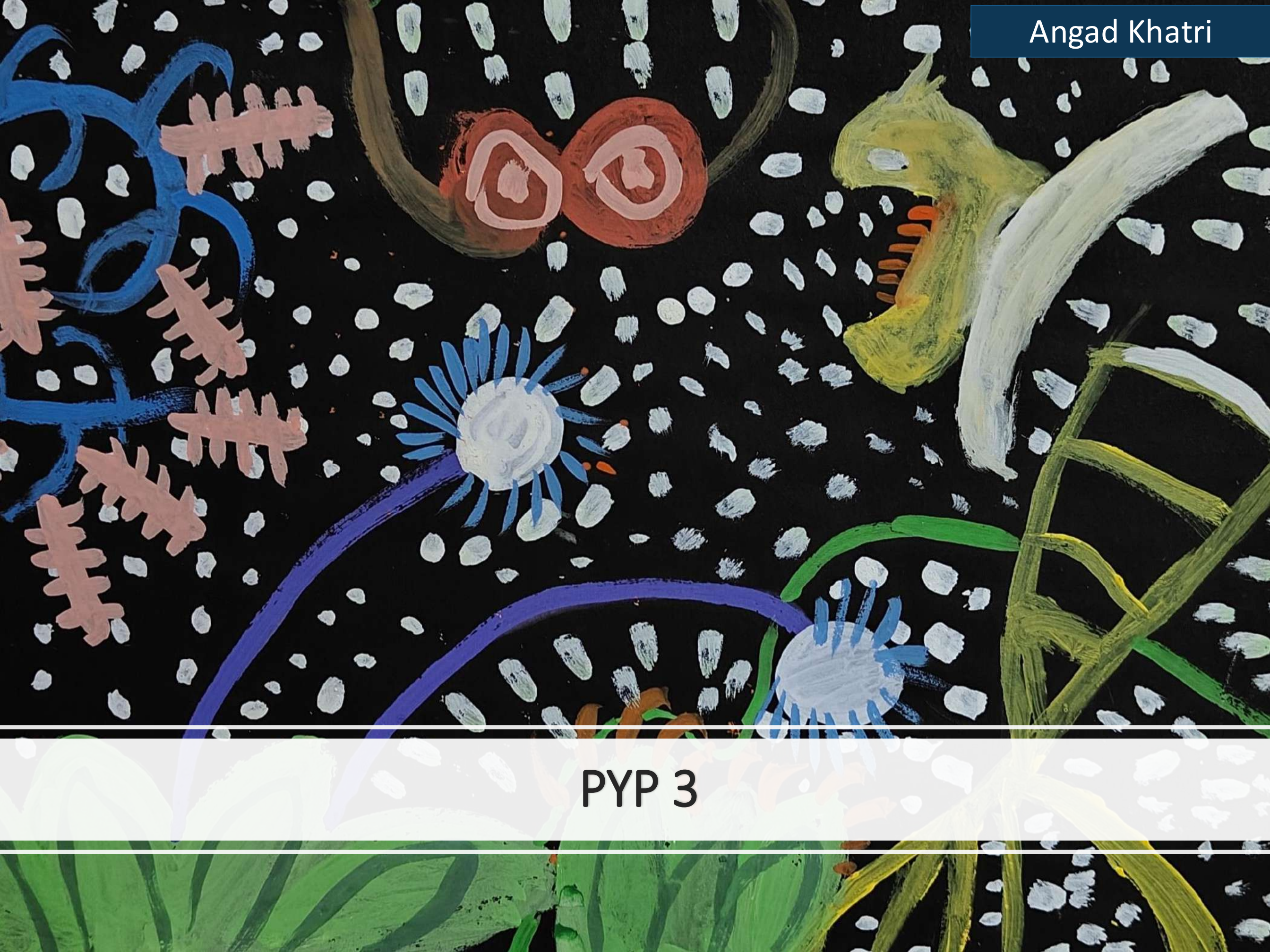
Reflection and metacognition

Subject Focus:

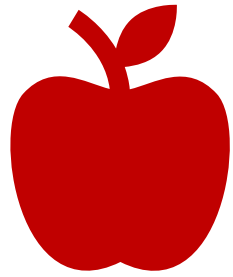
Science, Social Studies, Arts

Attributes:

Thinker, Reflective



PYP 3



Nutrition

3 GOOD HEALTH AND WELL-BEING



Who We Are

An inquiry into the nature of the self; beliefs and values; personal, physical, mental, social and spiritual health; human relationships including families, friends, communities, cultures; rights and responsibilities; what it means to be human.

Lines of Inquiry:

What nutrition is

Impact of food choices on health

Our responsibility towards well-being

Central Idea:

Responsible food choices can impact our health.

Concepts and Related Concepts:

Form (*similarities, differences*)

Causation (*justification, impact*)

Responsibility (*initiative*)

ATLs:

Research Skills (*Information Literacy*)

Self-management Skills (*Managing self, Mindfulness*)

Reflection and Metacognition

Subject Focus:

Mathematics, PSPE
Science

Attributes:

Inquirer, Reflective, Balanced





Civilizations

**11 SUSTAINABLE CITIES
AND COMMUNITIES**

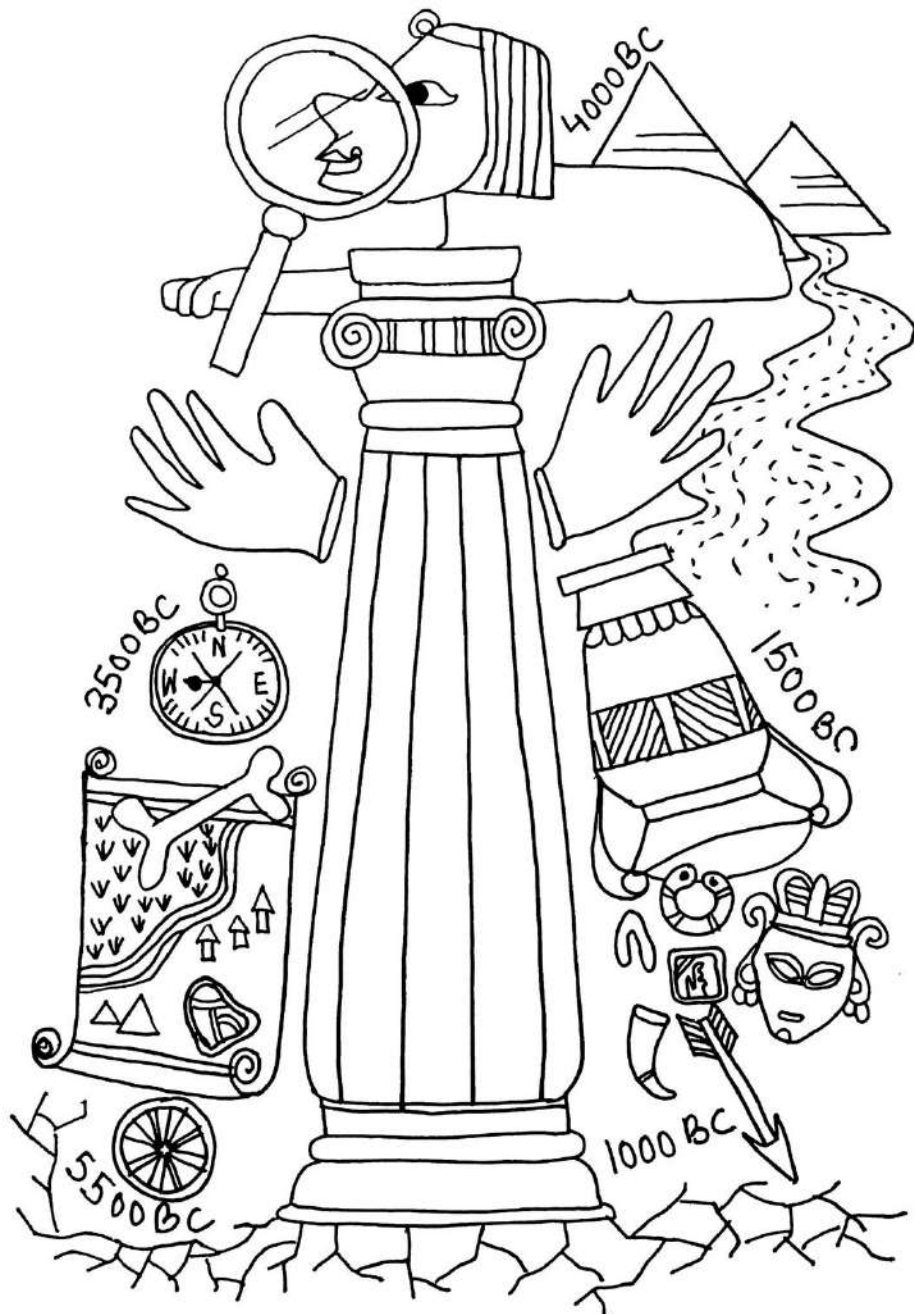


Where We Are In Place & Time

An inquiry into and orientation in place and time; personal histories; homes and journeys; the discoveries; explorations and migrations of humankind; the relationships between and the interconnectedness of individuals and civilizations, from local and global perspectives.

Lines of Inquiry:

Role of archaeology in discoveries
How civilizations emerged and developed
Influence of past civilizations on our lives



Central Idea:

Learning from past civilisations can influence our lives.

Concepts and Related Concepts:

Function (*role*)

Change (*transformation, adaptability*)

Causation (*influence*)

ATLs:

Research Skills (*Information-literacy*)

Thinking Skills (*Information transfer*)

Reflection and Metacognition

Subject Focus:

Social Studies, Art

Attributes:

Thinker, Inquirer, Communicator



Signs and Symbols

4 QUALITY
EDUCATION



How We Express Ourselves

An inquiry into the ways in which we discover and express ideas, feelings, nature, culture, beliefs and values; the ways in which we reflect on, extend and enjoy our creativity; our appreciation of the aesthetic.

Lines of Inquiry:

Different signs and symbols

Using signs and symbols to convey messages and information

How signs and symbols connect people and cultures

Central Idea:

We can use signs and symbols to communicate locally and globally.

Concepts and Related Concepts:

Form (*structure*)

Function (*purpose, communication*)

Connection (*relationships*)

ATLs:

Communication Skills (*Information-exchange*)

Thinking Skills (*Creative thinking*)

Reflection and Metacognition

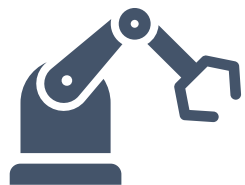
Subject Focus:

Language, Social Studies, Arts

Attributes :

Open-minded, Communicator, Reflective





Simple Machines

9 INDUSTRY, INNOVATION AND INFRASTRUCTURE



How The World Works

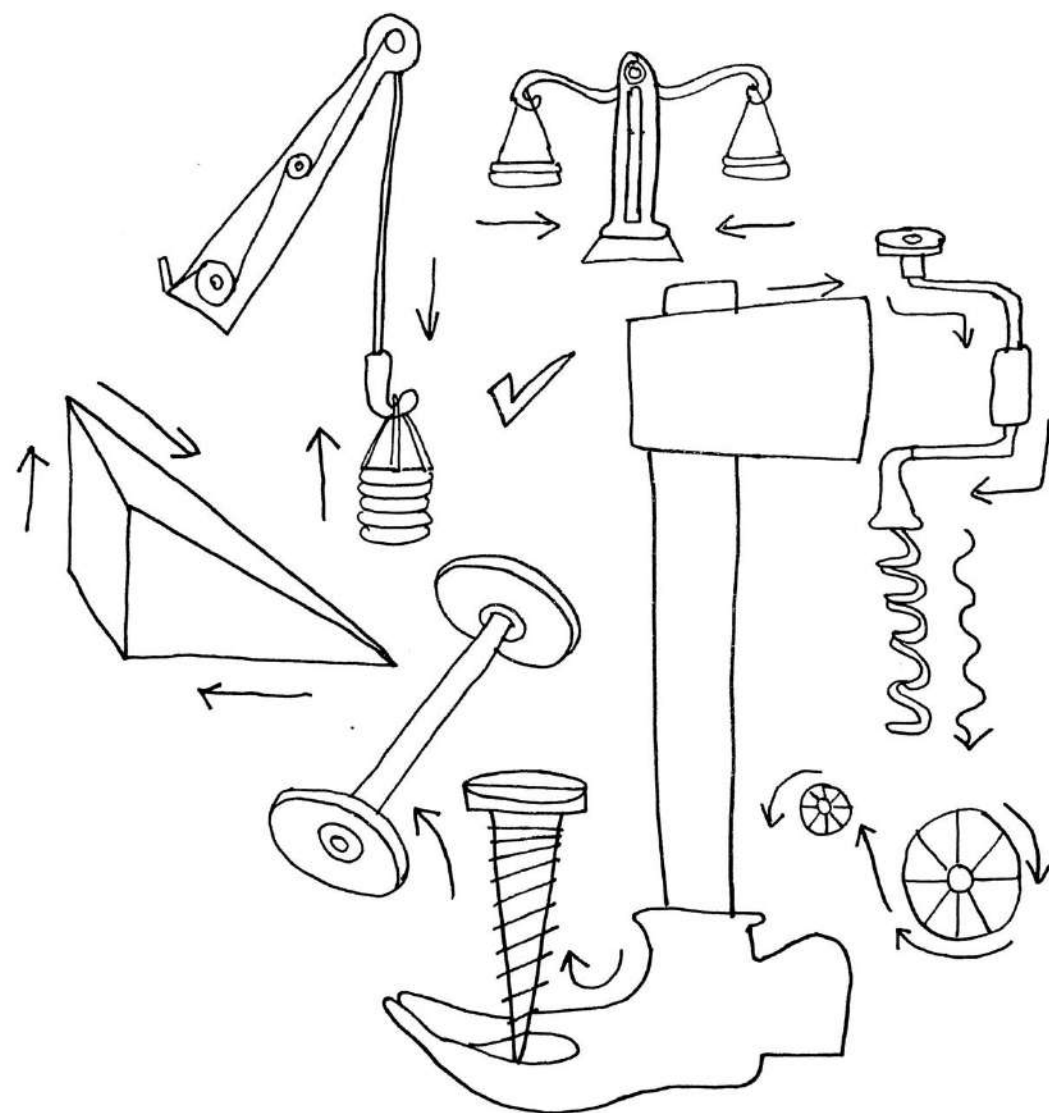
An inquiry into the natural world and its laws; the interaction between the natural world (physical and biological) and human societies; how humans use their understanding of scientific principles; the impact of scientific and technological advances on society and on the environment.

Lines of Inquiry :

Types of forces

How machines work

Designing effective machines to solve problem



Central Idea :

Understanding forces can help humans to design effective machines.

Concepts and Related Concepts :

Form (*properties*)

Function (*role*)

Connection (*relationships*)

ATLs :

Thinking Skills (*Critical thinking*)

Research Skills (*Information Literacy*)

Reflection and Metacognition

Subject Focus:

Science, Social Studies

Attributes:

Inquirer, Thinker, Risk-taker



Inventions

9 INDUSTRY, INNOVATION
AND INFRASTRUCTURE



11 SUSTAINABLE CITIES
AND COMMUNITIES



How We Organise Ourselves

An inquiry into the interconnectedness of human-made systems and communities; the structure and function of organizations, societal decision-making economic activities and their impact on humankind and the environment.

Lines of Inquiry :

Various inventions throughout history
Impact of inventions on our lives
How inventions can be used to promote sustainability.

Central Idea :

Inventions can influence the way we live and have implications for the future.

Concepts and Related Concepts :

Form (*structure, design*)

Causation (*consequences, impact*)

Responsibility (*initiatives*)

ATLs :

Thinking Skills (*Critical thinking*)

Social Skills (*Interpersonal relationships*)

Self- -management Skills:
(*Organization*)

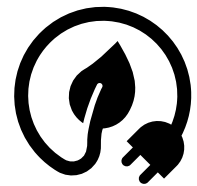
Reflection and Metacognition

Subject Focus:

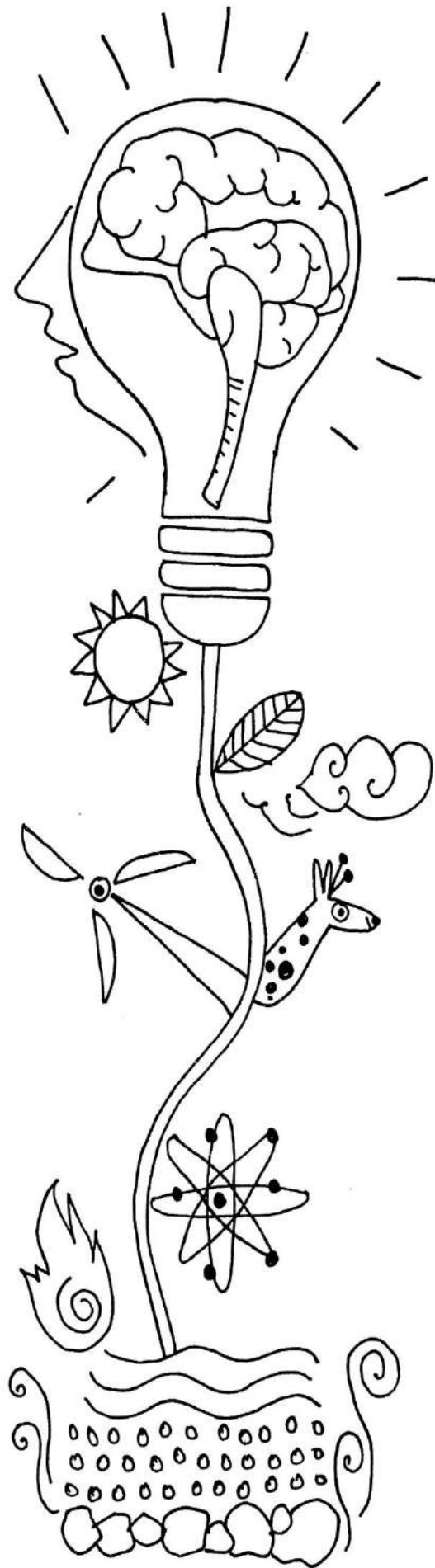
Social Studies, Science

Attributes :

Thinker, Reflective, Inquirer



Finite Resources



Sharing The Planet

An inquiry into rights and responsibilities in the struggle to share finite resources with other people and with other living things; communities and the relationships within and between them; access to equal opportunities; peace and conflict resolution.

Lines of Inquiry:

Kinds of resources and their distribution around the world

Causes of depletion of finite resources

Ways in which personal choices can help sustain the environment

12 RESPONSIBLE CONSUMPTION AND PRODUCTION



13 CLIMATE ACTION



Central Idea:

Distribution of earth's resources can impact the global community.

Concepts and Related Concepts:

Form (*properties, pattern*)

Causation (*consequences, impact*)

Perspective (*opinion, beliefs*)

ATLs:

Research Skills (*Information-literacy*)

Communication Skills (*Exchanging-information*)

Reflection and Metacognition

Subject Focus:

Social Studies, Science, PSPE

Attributes :

Reflective, Caring, Principled



Drishti Yadav

PYP 4



Children



Who We Are

An inquiry into the nature of the self; beliefs and values; personal, physical, mental, social and spiritual health; human relationships including families, friends, communities, cultures; rights and responsibilities; what it means to be human.

Lines of Inquiry:

Challenges and risks that children face

Causes and effects of these challenges and risks

Ways and opportunities to support well-being

Central Idea:

Awareness of challenges and risks faced by children can promote one's own and other's well-being.

Concepts and Related Concepts:

Form (*similarities and differences*)

Causation (*consequences and impact*)

Responsibility (*rights, values and initiative*)



ATLs:

Research skills (*Information literacy*)

Social skills (*Interpersonal relationships*)

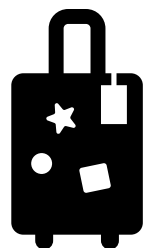
Self-management (*States of mind*)
Reflection and Metacognition

Subject Focus:

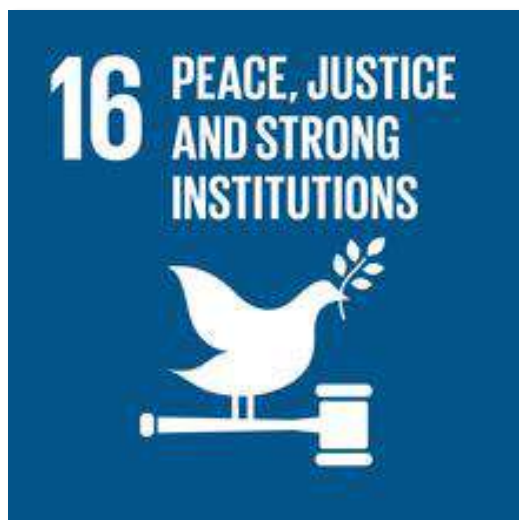
Science, Social Studies, PSPE

Attributes:

Balanced, Open-minded, Inquirer



Migration



Where We Are In Place & Time

An inquiry into and orientation in place and time; personal histories; homes and journeys; the discoveries; explorations and migrations of humankind; the relationships between and the interconnectedness of individuals and civilizations, from local and global perspectives.

Lines of Inquiry:

The reasons for migration

Migration throughout History

Effects of migration on communities, cultures, and individuals

Central Idea:

Human migration can be a response to challenges and opportunities.

Concepts and Related Concepts:

Causation (*impact*)

Change (*adaptation*)

Connection (*systems, relationships*)

ATLs:

Research Skills: (*Information literacy*)

Communication Skill: (*Exchanging information*)

Self-management Skills: (*Organization*)

Reflection and metacognition

Subject Focus:

PSPE, Social Studies

Attributes :

Risk-taker, Thinker, Open-minded



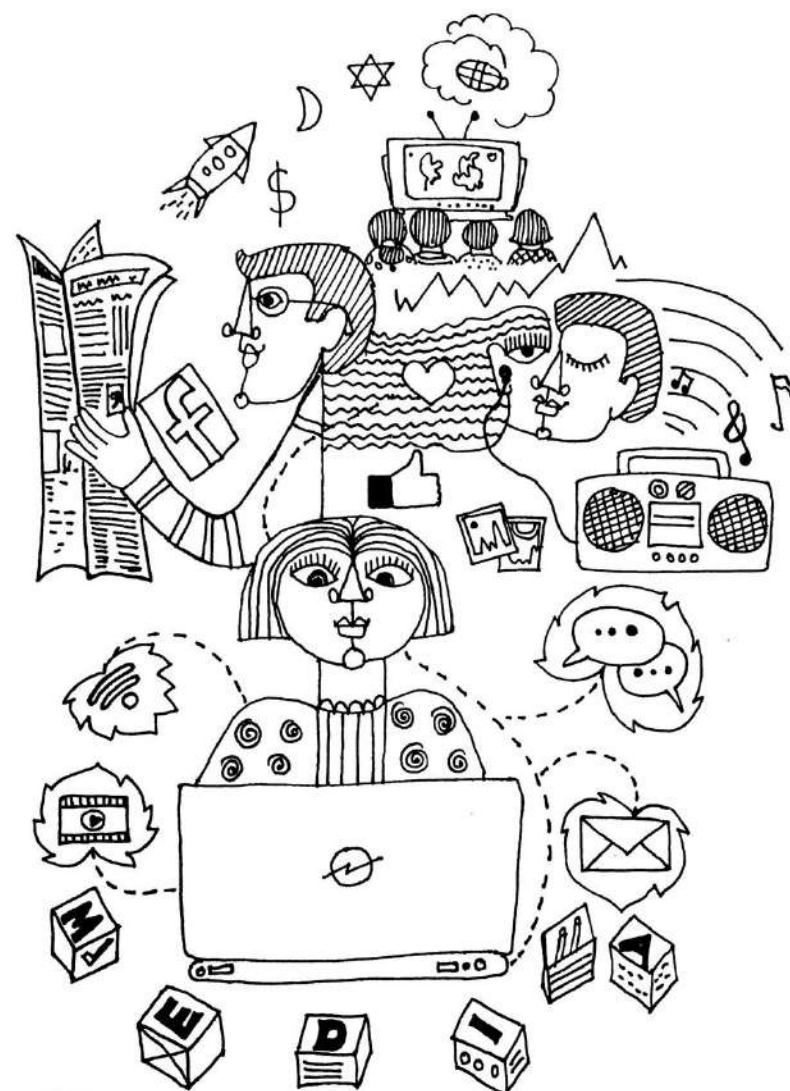


Media

4 QUALITY
EDUCATION



5 GENDER
EQUALITY



How We Express Ourselves

An inquiry into the ways in which we discover and express ideas, feelings, nature, culture, beliefs and values; the ways in which we reflect on, extend and enjoy our creativity; our appreciation of the aesthetic.

Lines of Inquiry :

How media works

Elements of media that can influence the society

Responsible use of media

Central Idea :

Media can influence people's perceptions and choices.

Concepts and Related Concepts :

Function (*communication, role*)

Causation (*impact, stereotype*)

Responsibility (*rights, initiative*)

ATLs :

Research Skills: (*Media literacy*)

Thinking Skills: (*Creative thinking*)

Communication Skill: (*ICT*)

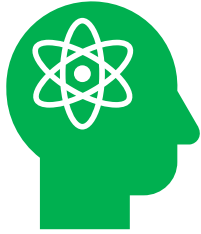
Reflection and metacognition

Subject Focus:

Social Studies, Language, Arts

Attributes:

Principled, Communicator, Reflective



Scientific Laws

7 AFFORDABLE AND CLEAN ENERGY



12 RESPONSIBLE CONSUMPTION AND PRODUCTION



How The World Works

An inquiry into the natural world and its laws; the interaction between the natural world (physical and biological) and human societies; how humans use their understanding of scientific principles; the impact of scientific and technological advances on society and on the environment.

Lines of Inquiry:

Natural world and its laws

Influence of scientific laws on our lives

Different perspectives on the application of scientific laws

Central Idea:

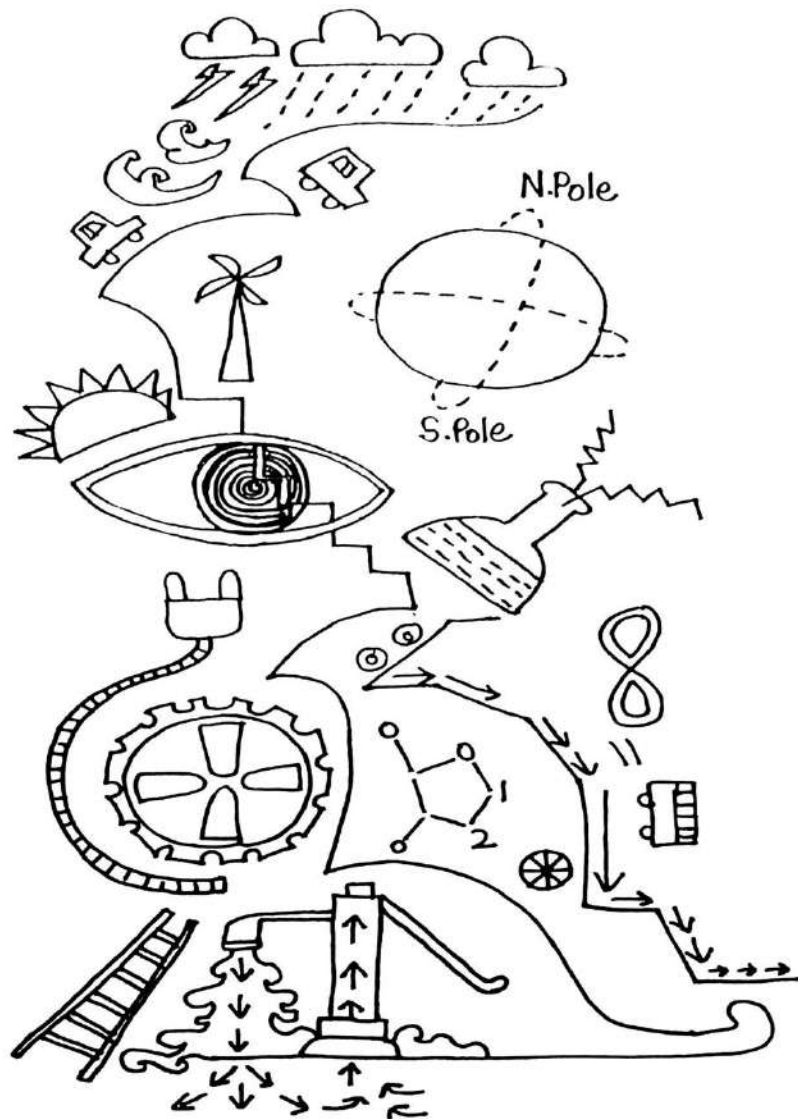
The understanding of the natural world and its laws can influence the way we live.

Concepts and Related Concepts:

Form (*structure, pattern*)

Connection (*cycles, systems*)

Perspective (*subjectivity and opinion*)



ATLs:

Research Skills (*Information literacy*)

Thinking Skills (*Critical thinking*)

Communication Skills (*Exchanging information*)

Subject Focus:

Science, Social Studies
Mathematics

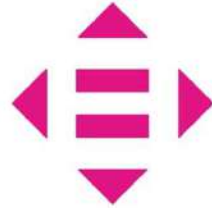
Attributes:

Knowledgeable, Communicator,
Reflective



Governments

10 REDUCED INEQUALITIES



16 PEACE, JUSTICE AND STRONG INSTITUTIONS



How We Organize Ourselves

An inquiry into the interconnectedness of human-made systems and communities; the structure and function of organizations, societal decision-making economic activities and their impact on humankind and the environment.

Lines of Inquiry:

Kinds of government systems
Impact of systems on citizens
Our responsibilities as citizens

Central Idea:

Government systems impact the lives of the citizens.

Concepts and Related Concepts:

Function (*roles, systems*)
Causation (*consequences*)
Responsibility (*rights, citizenship*)

ATLs:

Research Skills (*Information literacy*)

Social Skills (*Developing positive interpersonal skills*)

Thinking Skills (*Critical thinking*)

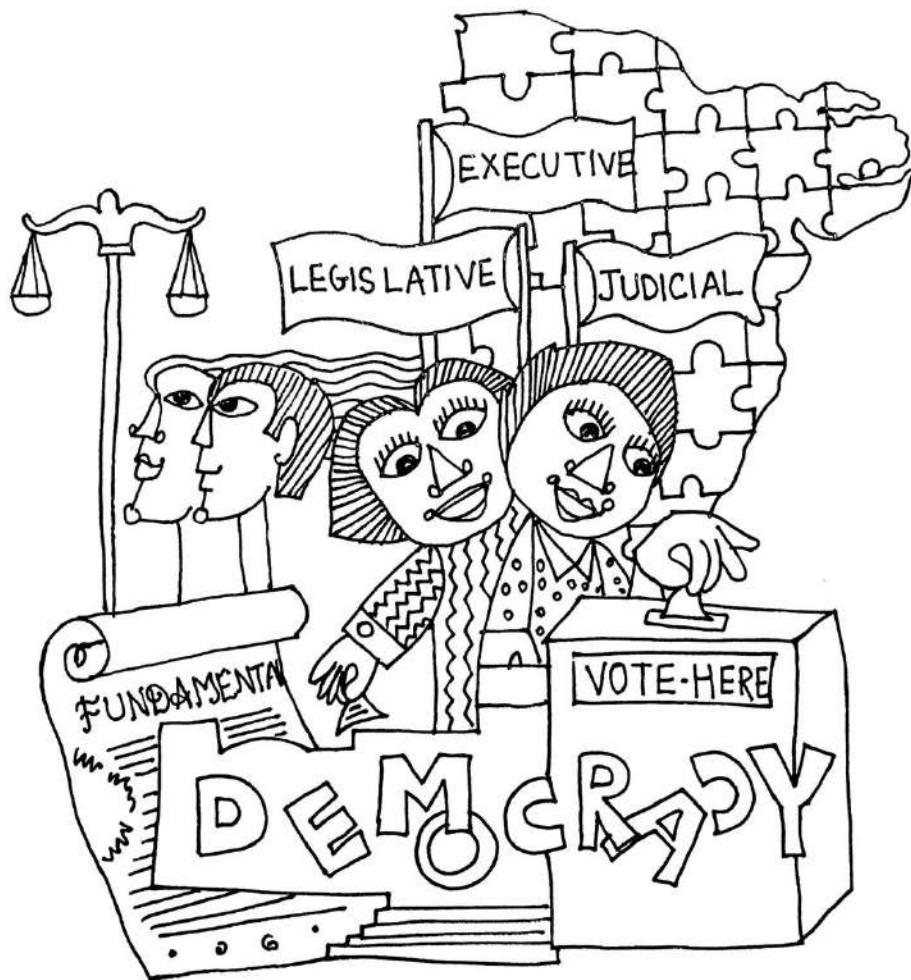
Reflection and metacognition

Subject Focus:

Social Studies, PSPE

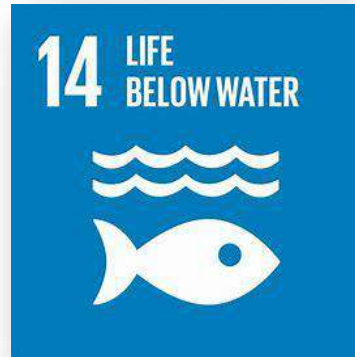
Attributes:

Thinker, Principled, Open-minded





Biodiversity



Sharing The Planet

An inquiry into rights and responsibilities in the struggle to share finite resources with other people and with other living things; communities and the relationships within and between them; access to equal opportunities; peace and conflict resolution.

Lines of Inquiry:

Ways in which the components of ecosystems are interdependent

How ecosystems change

How we can help in maintaining biodiversity

Central Idea:

Maintaining the interdependent balance within ecosystems can sustain biodiversity.

Concepts and Related Concepts:

Connection (*interdependence, relationships*)

Change (*transformation*)

Responsibility (*initiative*)



ATLs:

Research Skills (*Information literacy*)

Thinking skills (*Critical thinking*)

Communication Skills (*Exchanging information and Literacy*)

Reflection and metacognition

Subject Focus:

Science, Social Studies

Attributes:

Inquirer, Balanced, Caring

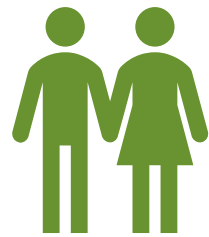


Samaira Bhatti



Agastya Nagrath

PYP 5



Re- Discovering Myself

3 GOOD HEALTH
AND WELL-BEING



5 GENDER
EQUALITY



Who We Are

An inquiry into the nature of the self; beliefs and values; personal, physical, mental, social and spiritual health; human relationships including families, friends, communities, cultures; rights and responsibilities; what it means to be human.

Lines of Inquiry:

Interconnectedness between body systems

How we change as we grow

How best we can prepare for forthcoming changes

Central Idea:

Preparing for inevitable growth and change can contribute to our well-being.

Concepts and Related Concepts:

Connection (*relationships*)

Change (*growth, cycles*)

Responsibility (*values, initiative*)

ATLs:

Research Skills (*Information Literacy*)

Social Skills (*Social and Emotional Intelligence*)

Self-management Skills (*Mindfulness*)

Reflection and metacognition

Subject Focus:

Science, Social Studies, PSPE

Attributes:

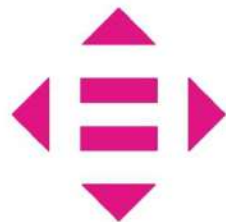
Principled, Balanced, Open-minded



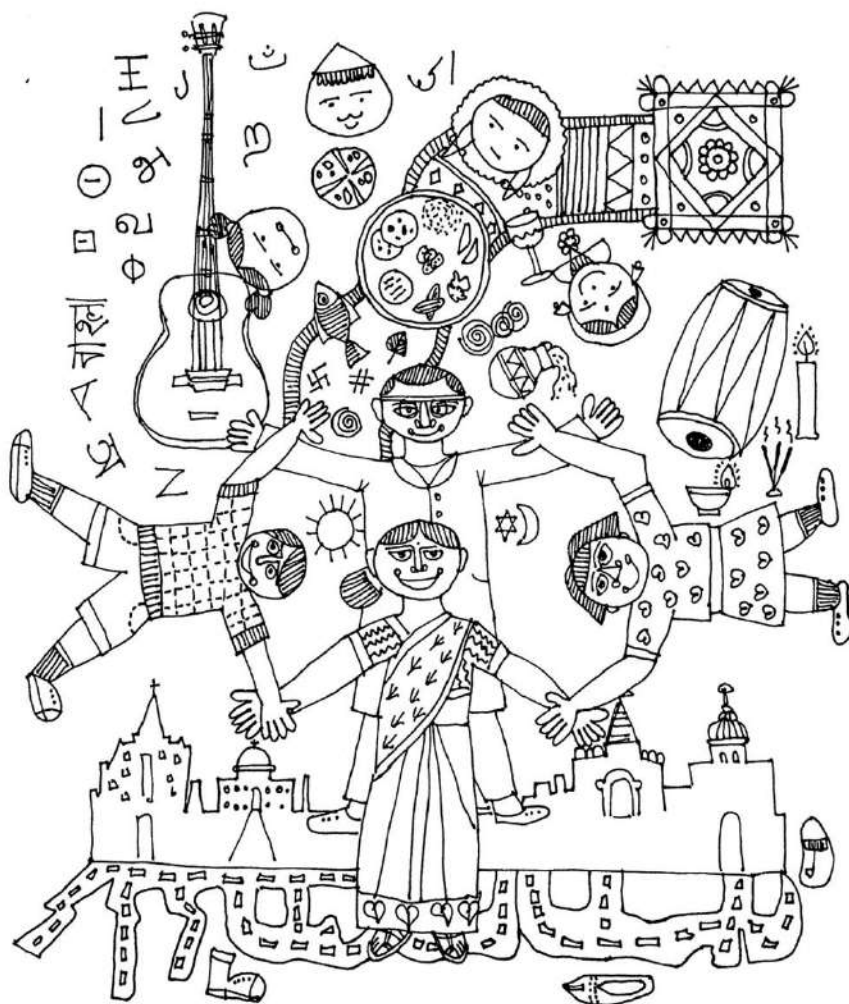


Culture

10 REDUCED
INEQUALITIES



17 PARTNERSHIPS
FOR THE GOALS



Where We Are In Place & Time

An inquiry into and orientation in place and time; personal histories; homes and journeys; the discoveries; explorations and migrations of humankind; the relationships between and the interconnectedness of individuals and civilizations, from local and global perspectives.

Lines of Inquiry:

Different family traditions and cultures

Connections between various cultures

Our responsibility towards becoming a world citizen

Central Idea:

Knowing about family traditions can enable us to discover our cultural origins and understand human commonalities.

Concepts and Related Concepts:

Form (*structure, difference, similarities*)

Connection (*relationships, interdependence*)

Responsibility (*initiative, values*)

ATLs:

Research Skills (*Information Literacy*)

Thinking Skills (*Critical thinking*)

Social Skills (*Interpersonal relationships*)

Reflection and metacognition

Subject Focus:

Social Studies, Arts, PSPE

Attributes:

Open-minded, Reflective, Caring



Poetic Expressions

4 QUALITY EDUCATION



How We Express Ourselves

An inquiry into the ways in which we discover and express ideas, feelings, nature, culture, beliefs and values; the ways in which we reflect on, extend and enjoy our creativity; our appreciation of the aesthetic.

Lines of Inquiry:

What poetry is

Role of poetry in conveying meaning and evoking emotions

Our perspective on famous poetic expressions



Central Idea:

Poetry can be a creative medium to express thoughts, emotions and ideas.

Concepts and Related Concepts:

Form (*structure, pattern*)

Function (*role, communication*)

Perspective (*viewpoints, interpretation*)

ATLs:

Research Skills (Information Literacy)

Communication Skills (*Literacy*)

Thinking Skills (*Creative thinking*)

Reflection and metacognition

Subject Focus:

Social Studies, Language, Arts

Attributes :

Thinker, Communicator, Reflective



PYP Exhibition



How The World Works

An inquiry into the natural world and its laws; the interaction between the natural world (physical and biological) and human societies; how humans use their understanding of scientific principles; the impact of scientific and technological advances on society and on the environment.

Lines of Inquiry:

Students will brainstorm and create the Lines of inquiry

Central Idea:

Students will brainstorm and create the Central Idea.

Concepts and Related Concepts:

All the concepts get covered

ATLs:

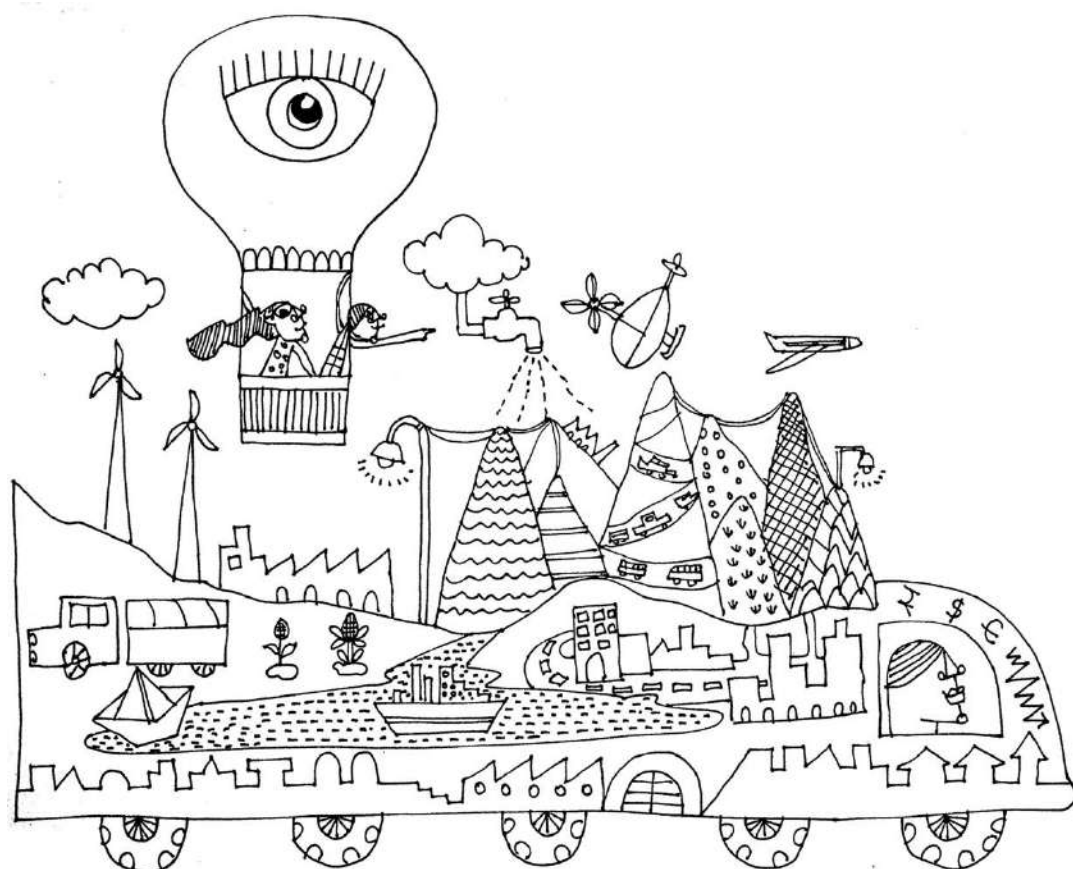
All the skills will be covered

Subject Focus:

Depends on students' interest and choices

Attributes:

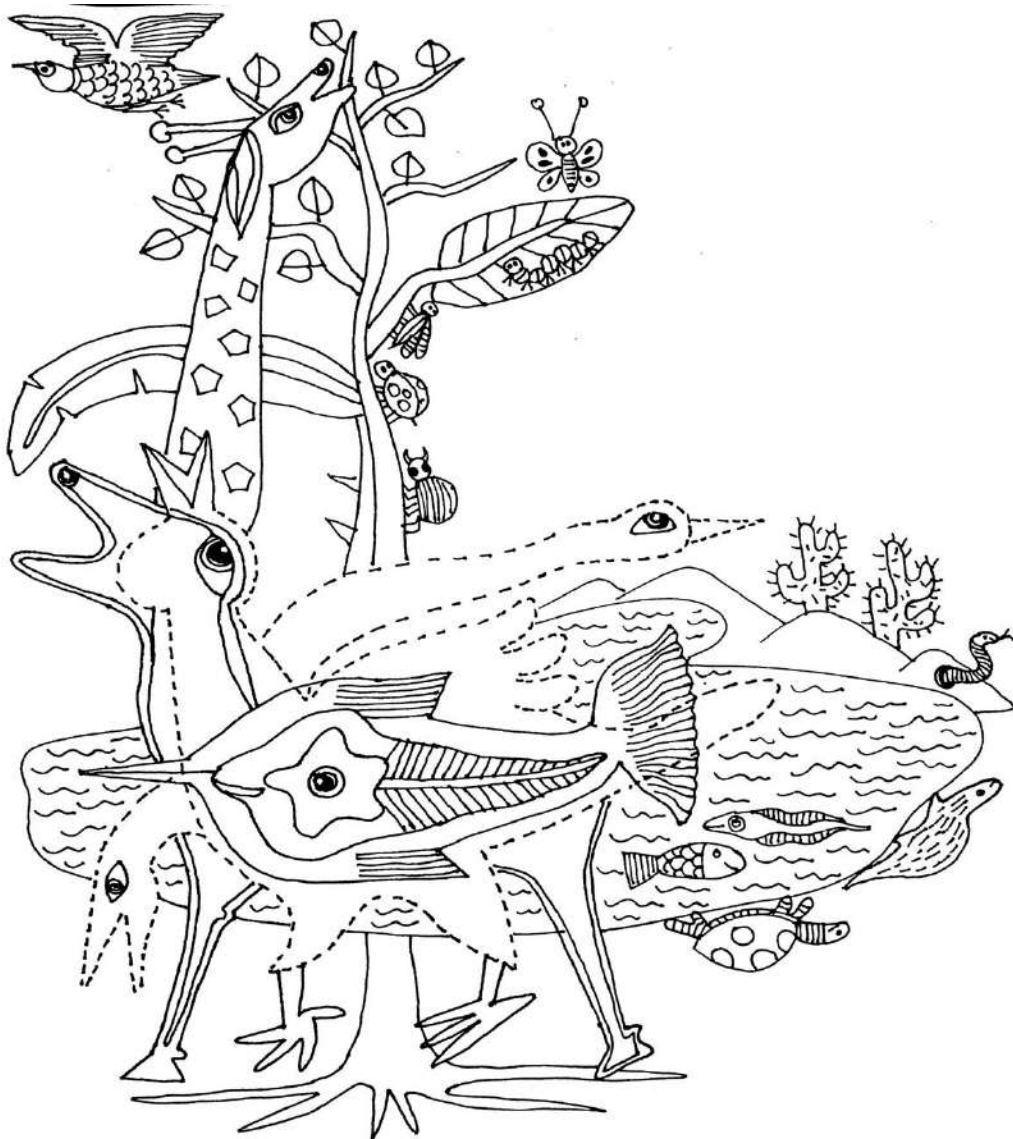
All the attributes will be covered







Adaptation



Sharing The Planet

An inquiry into rights and responsibilities in the struggle to share finite resources with other people and with other living things; communities and the relationships within and between them; access to equal opportunities; peace and conflict resolution.

Lines of Inquiry:

How species adapt to the environment

Factors affecting survival

Our responsibility towards conserving the environment

Central Idea:

Survival of living beings can depend on adaptation to environmental conditions.

Concepts and Related Concepts:

Change (*adaptation*)

Causation (*impact*)

Responsibility (*initiative*)

ATLs:

Research Skills (*Information Literacy and media literacy*)

Thinking Skills (*Critical Thinking and transfer skills*)

Social Skills (*Social and emotional intelligence*)

Reflection and metacognition

Subject Focus:

Science, Social Studies

Attributes:

Inquirer, Reflective, Caring



Credits :

- Reviewed and planned by: Primary School Team
- Concept: Principal Primary School, Ms. Monica Bhimwal
- Compilation: PYP Coordinator, Ms. Ritu Sehgal
- Illustrations: Art Specialist, Mr. Kapil Kumar
- Digital Design and Digital compilation: Primary School, Service Coordinator and ES Facilitator, Ms. Bhavna Mathew
- Students Artwork
- SDG Clip arts: Google images